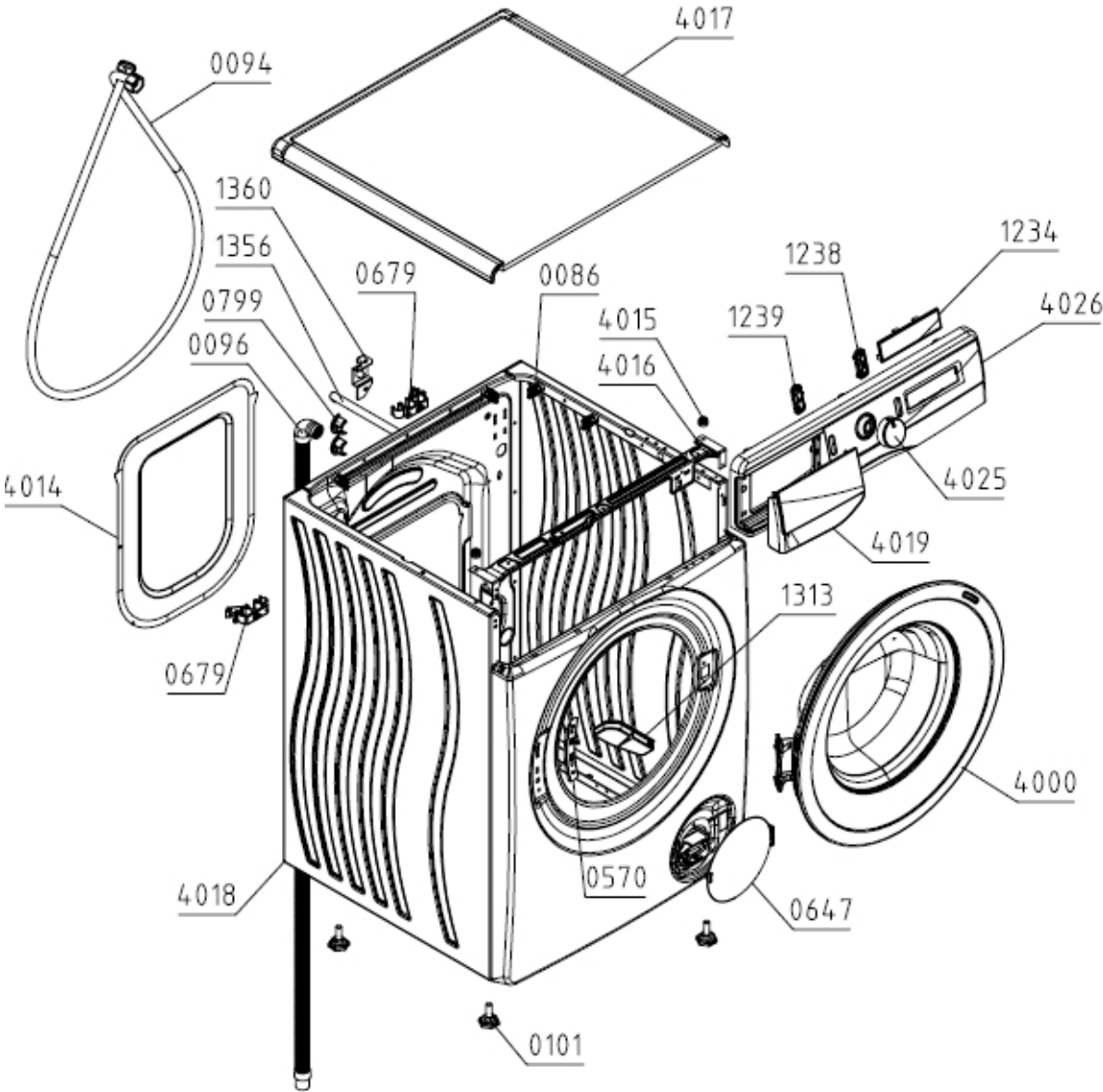


# LISTE DES PIÈCES DÉTACHÉES

Type (Modèle Usine) PS22/16140  
Modèle WFGP901439VM  
ID Produit / ART. No 741807

Marque HISENSE  
Version 17.10.2023  
N° d'Index 02

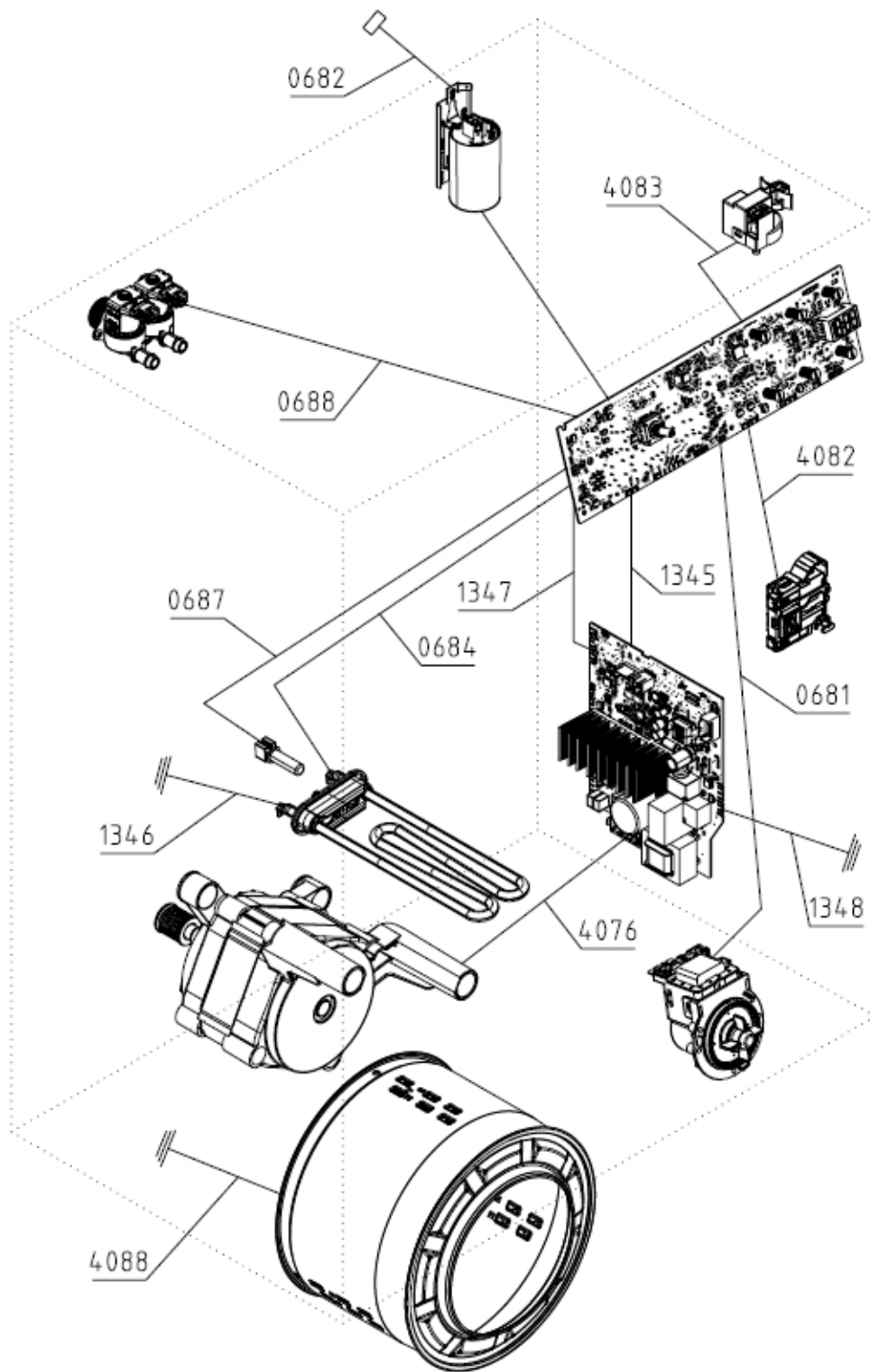
021447



| Position | Identifiant | Désignation             | Quantité | Validité | Extra ID |
|----------|-------------|-------------------------|----------|----------|----------|
| 0086     | 547104      | CLAMP PS                | 12       |          |          |
| 0094     | 157474      | SUPPLY HOSE HV PS       | 1        |          |          |
| 0096     | 699606      | DISCHARGE HOSE NK PS-15 | 1        |          |          |

| Position | Identifiant | Désignation                          | Quantité | Validité | Extra ID |
|----------|-------------|--------------------------------------|----------|----------|----------|
| 0101     | 816544      | ADJUSTABLE FOOT PS-10 KPL            | 4        |          |          |
| 0570     | 466627      | HINGE PLATE PS-15                    | 1        |          |          |
| 0647     | 579303      | FILTER COVER PS-15 KPL               | 1        |          |          |
| 0679     | 877538      | HOSE HOLDER PS-22                    | 2        |          |          |
| 0799     | 148999      | RUBBER SEAL PS-03                    | 1        |          |          |
| 1234     | 846693      | DISPLAY PLATE B1 PS-22               | 1        |          |          |
| 1238     | 846677      | PAUSE KEY PS/SP-22                   | 1        |          |          |
| 1239     | 846676      | SWITCH ON KEY PS/SP-22               | 1        |          |          |
| 1313     | 829842      | PROTECTION PMCU PS-20                | 1        |          |          |
| 1356     | 466625      | BLOCKING ROD 600 PS-15               | 2        |          |          |
| 1360     | 587350      | TRANSPORT RODS SUPORT                | 2        |          |          |
| 4000     | 863875      | DOOR PS-15 ČR KPL                    | 1        |          |          |
| 4014     | 466535      | REAR WALL COVER PS-15 F              | 1        |          |          |
| 4015     | 578966      | WORKTOP PLUG PS-15 ASSY              | 2        |          |          |
| 4016     | 808503      | CONTROL PANEL HOLDER PS-15 MOLLIS    | 1        |          |          |
| 4017     | 884416      | WORKTOP 60 PS-22 KPL                 | 1        |          |          |
| 4018     | 714419      | HOUSING 60-1600 PS-15 LA070-S        | 1        |          |          |
| 4019     | 865168      | SOAP DISPENSER HANDLE PS-22 HSN SIGN | 1        |          |          |
| 4025     | 863443      | CONTROL KNOB 9005 PS/SP-22 KPL       | 1        |          |          |
| 4026     | 865094      | CONTROL PANEL B1 PS-22 FR/NS HSN SIG | 1        |          |          |

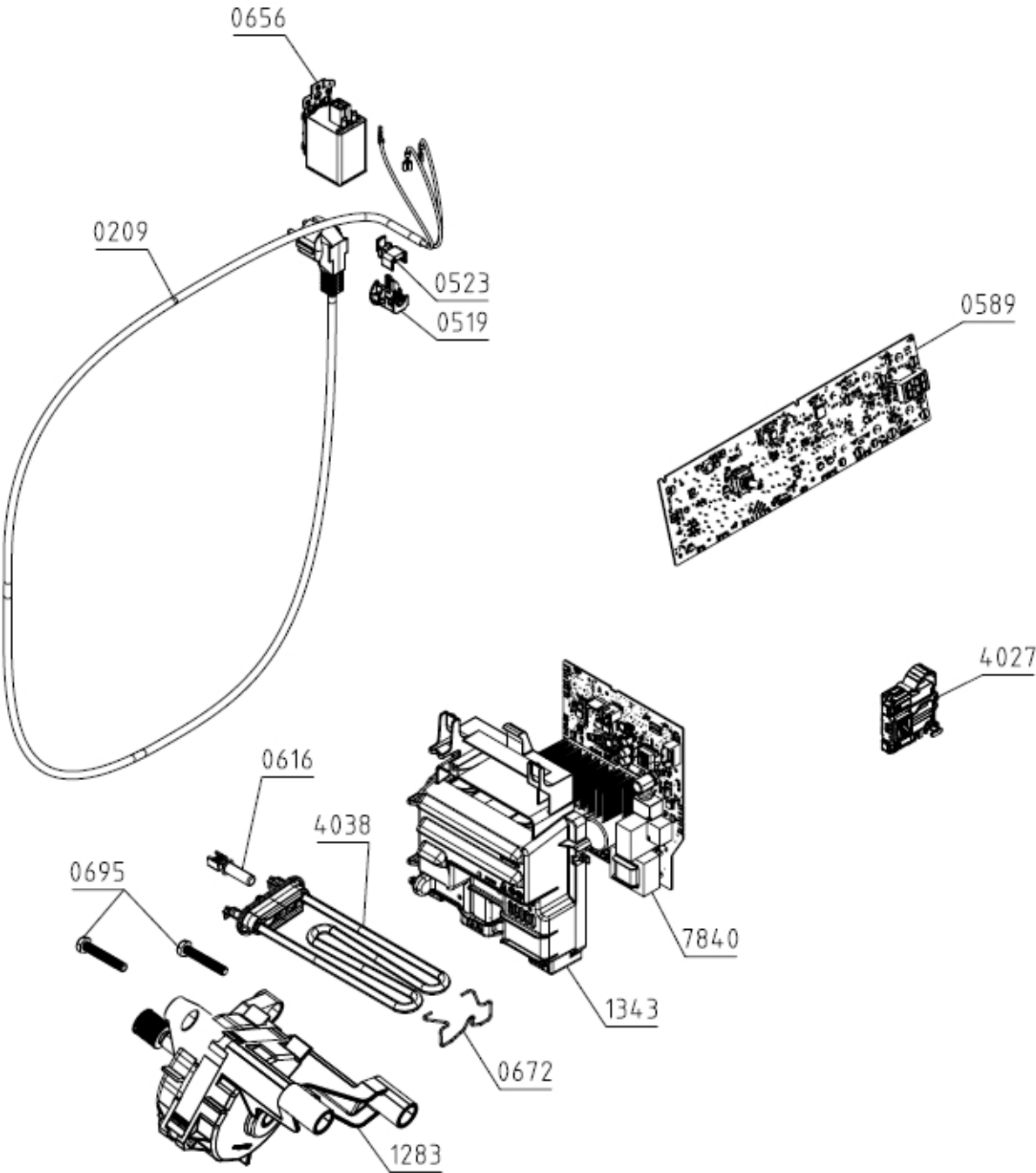
023457



| Position | Identifiant | Désignation                             | Quantité | Validité | Extra ID |
|----------|-------------|---|----------|----------|----------|
| 0681     | 870460      | WIRING HARNESS PUMP 60/EN PS-22 N       | 1        |          |          |
| 0682     | 870423      | WIRING HARNESS SUPPLY 60/EN PS-22 N     | 1        |          |          |
| 0684     | 870431      | WIRING HARNESS HEATER 60/EN PS-22 N     | 1        |          |          |
| 0687     | 870456      | WIRING HARNESS - NTC 60/EN PS-22 N      | 1        |          |          |
| 0688     | 870430      | WIRING HARNESS VALVE 60/EN PS-22 N      | 1        |          |          |
| 1345     | 870436      | WIRING HARNESS SUPPLY MCU 60/EN PS-22 N | 1        |          |          |

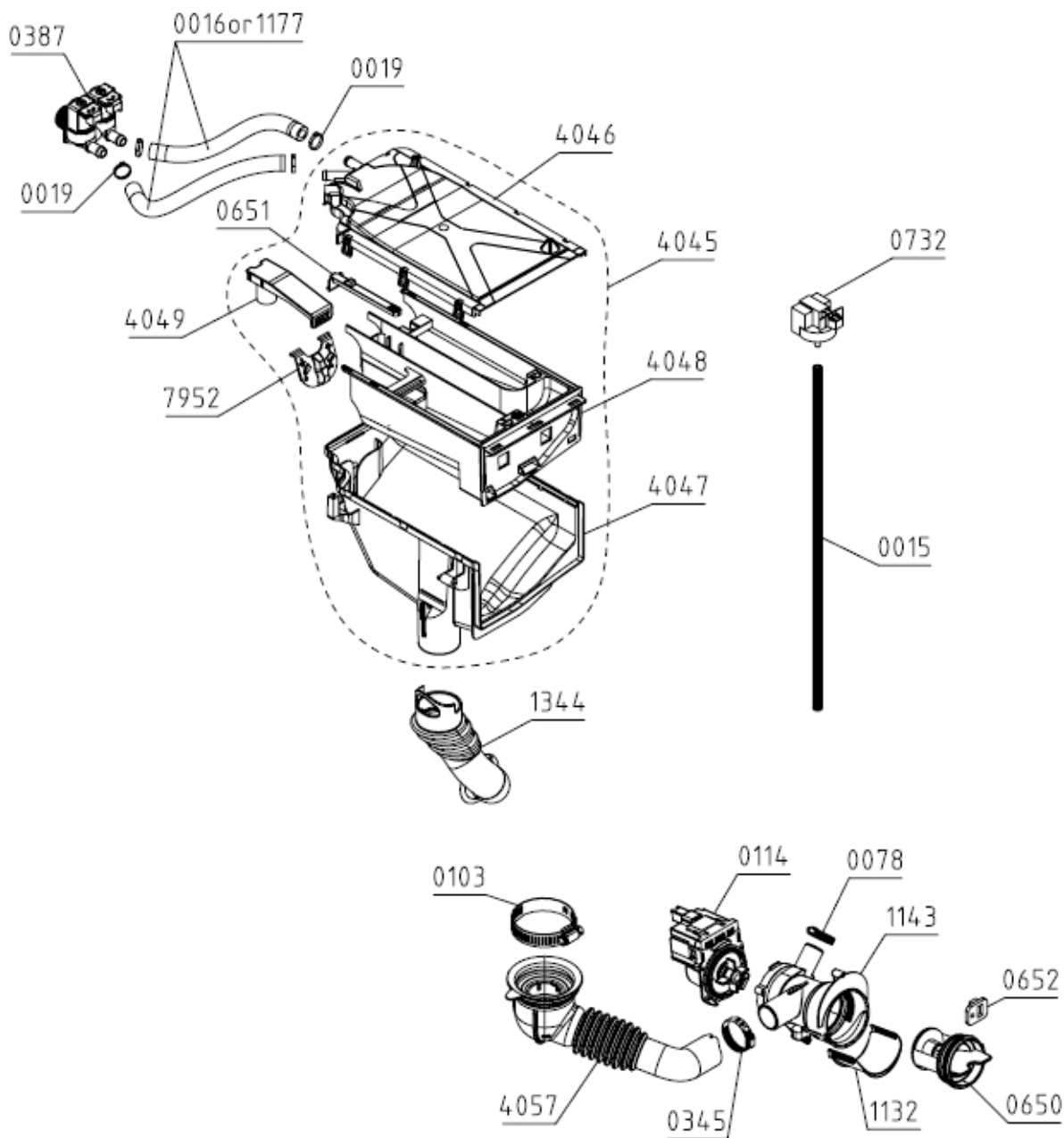
| Position | Identifiant | Désignation                             | Quantité | Validité | Extra ID |
|----------|-------------|---|----------|----------|----------|
| 1346     | 870419      | WIRING HARNESS EARTHING HEATER PS-22 N  | 1        |          |          |
| 1347     | 870450      | WIRING HARNESS COMMUN.MCU 60/EN PS-22 N | 1        |          |          |
| 1348     | 870297      | EARTHING MCU PS-22 N                    | 1        |          |          |
| 4076     | 870296      | WIRING HARNESS MOTOR EN PS-22 N         | 1        |          |          |
| 4082     | 870418      | WIRING HARNESS DOOR SWITCH EN PS-22 N   | 1        |          |          |
| 4083     | 870417      | WIRING HARNESS SENSOR LEVEL EN PS-22 N  | 1        |          |          |
| 4088     | 870168      | GROUNDING DRUM BM PS-15 N               | 1        |          |          |

023462



| Position | Identifiant | Désignation                             | Quantité | Validité | Extra ID |
|----------|-------------|---|----------|----------|----------|
| 0209     | 132222      | CABLE WITH PLUG H05VV-F3G1.0 1550       | 1        |          |          |
| 0519     | 667400      | RUBBER SEAL                             | 1        |          |          |
| 0523     | 667401      | CLIP FOR INITIATION SLEEVE              | 1        |          |          |
| 0589     | 910530      | CONTROL UNIT B1-BM66 PS-22/64-A-14-9-NS | 1        |          |          |
| 0616     | 658696      | TEMPERATURE SENSOR                      | 1        |          |          |
| 0656     | 431466      | RFI-FILTER 1,5MH H.A.L.                 | 1        |          |          |
| 0672     | 194555      | HEATER CLAMP PS-03 CA                   | 1        |          |          |
| 0695     | 862660      | SCREW PT8X30 10.9-F-A2F KPL             | 2        |          |          |
| 1283     | 876434      | ELECTROMOTOR BPM 54/60 WOLONG           | 1        |          |          |
| 1343     | 846697      | CONTROL UNIT HOLDER MCU PS-22           | 1        |          |          |
| 4027     | 579333      | DOOR LOCK PS-15                         | 1        |          |          |
| 4038     | 602720      | TUB.HEATER 230V/1700W                   | 1        |          |          |
| 7840     | 906779      | SUPPLY UNIT BM-9.66 PS-22 WOLO3 UL4     | 1        |          |          |

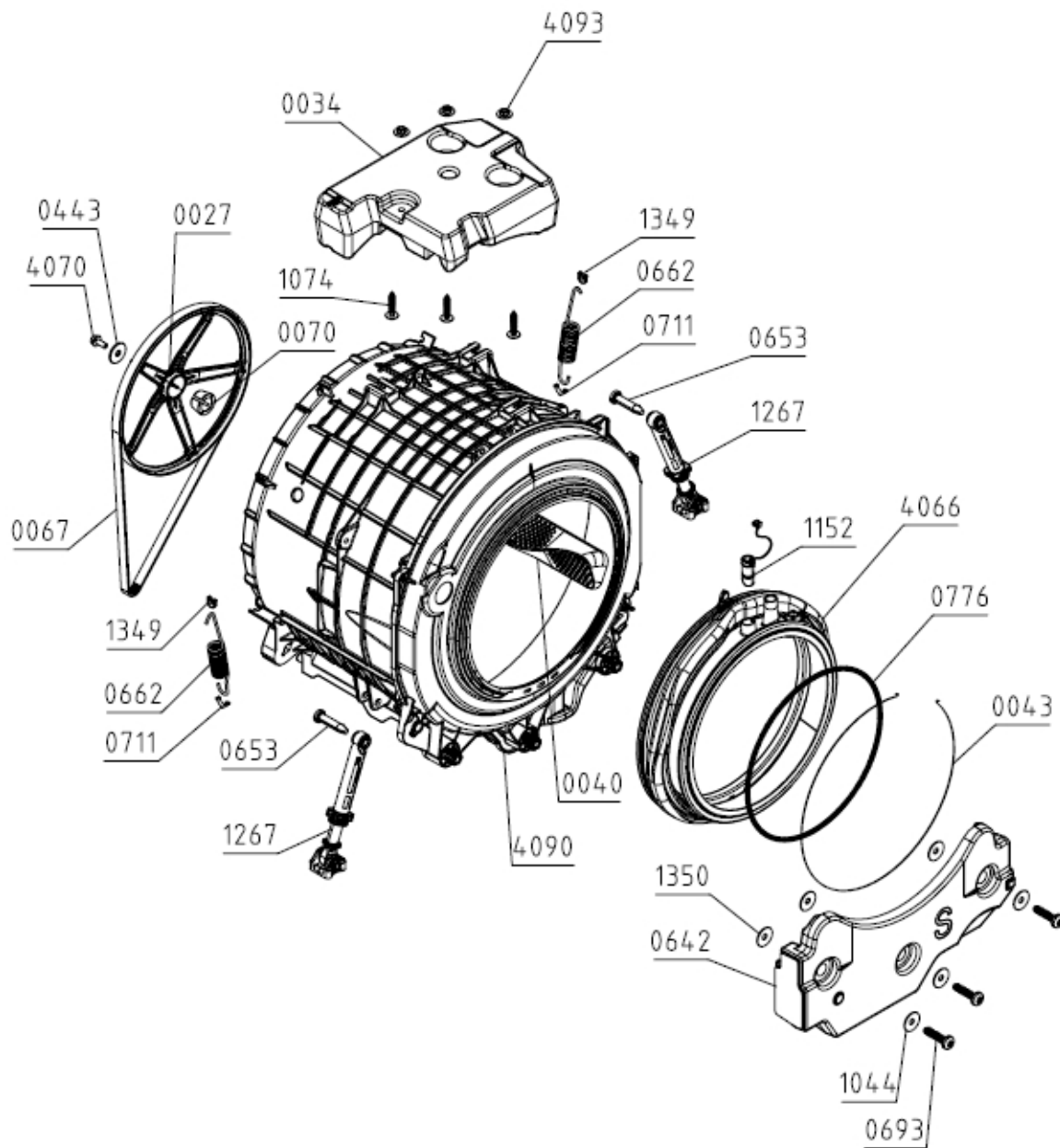
024424



| Position | Identifiant | Désignation                            | Quantité | Validité | Extra ID |
|----------|-------------|--|----------|----------|----------|
| 0015     | 711818      | HYDROSTAT HOSE PS-03 L555              | 1        |          |          |
| 0019     | 314400      | CLAMP - PLASTIC D 16                   | 4        |          |          |
| 0078     | 498292      | CLAMP D28,6                            | 1        |          |          |
| 0103     | 548401      | CLAMP - WIRE PS D 65                   | 1        |          |          |
| 0114     | 665323      | DISCHARGING PUMP T2107 AL ASKOLL       | 1        |          |          |
| 0345     | 537874      | CLAMP - WIRE D 38                      | 1        |          |          |
| 0387     | 587559      | ELECTRIC VALVE - DOUBLE                | 1        |          |          |
| 0650     | 716300      | FILTER INSERTION E PS-15               | 1        |          |          |
| 0651     | 579171      | SNAP PIN PS-15                         | 1        |          |          |
| 0652     | 587438      | FILTER SHOCK ABSORBER                  | 1        |          |          |
| 0732     | 797414      | WATER LEVEL SENSOR ST-545 NS METALFLEX | 1        |          |          |

| Position | Identifiant | Désignation                      | Quantité | Validité | Extra ID |
|----------|-------------|----------------------------------|----------|----------|----------|
| 1132     | 333909      | DISCHARGE CHANNEL PS-10          | 1        |          |          |
| 1143     | 333903      | FILTER BOX PS-10                 | 1        |          |          |
| 1177     | 309930      | HOSE PS D15X260                  | 2        |          |          |
| 1344     | 838776      | DETERGENT HOSE PS-20             | 1        |          |          |
| 4045     | 865319      | SOAP DISPENSER BOL PS-15 KPL     | 1        |          |          |
| 4046     | 466586      | SOAP DISPENSER LID PS-15 ASSY.   | 1        |          |          |
| 4047     | 865317      | SOAP DISPENSER HOUSING BOL PS-15 | 1        |          |          |
| 4048     | 579190      | SOAP DISPENSER DRAWER PS-15      | 1        |          |          |
| 4049     | 672929      | SOFTENER INSERT PS-15            | 1        |          |          |
| 4057     | 590300      | HOSE TUB-FILTER PS-15 KPL        | 1        |          |          |
| 7952     | 466608      | LIQUID DETERGENT INSERT PS-15    | 1        |          |          |

**025408**



| Position | Identifiant | Désignation                              | Quantité | Validité | Extra ID |
|----------|-------------|--|----------|----------|----------|
| 0027     | 339066      | BELT PULLEY PS-10                        | 1        |          |          |
| 0034     | 338900      | COUNTERWEIGHT - UPPER PS-10              | 1        |          |          |
| 0040     | 664610      | DRUM RIB WITH SHOWER 60 PS-15            | 3        |          |          |
| 0043     | 853975      | WIRE CLIP D350 KPL                       | 1        |          |          |
| 0067     | 623111      | RIBBED BELT 6EPJ 1260 GATES              | 1        |          |          |
| 0070     | 587405      | PULLEY SLEEVE 1200 PS-03                 | 1        |          |          |
| 0443     | 234660      | WASHER 10,5X36X3                         | 1        |          |          |
| 0642     | 686252      | FRONT WEIGHT PS-15                       | 1        |          |          |
| 0653     | 587313      | TUB SHOCK ABSORBER PIN PS-03 000         | 2        |          |          |
| 0662     | 882394      | TUB SPRING 60 BE 4,0 PS-22               | 2        |          |          |
| 0693     | 587309      | SCREW PT100X50-WN5452-50IP-EJOT-A2K-TORX | 3        |          |          |
| 0711     | 587346      | SUPPORT SPRING INSERT PS-03 040          | 2        |          |          |



| Position | Identifiant | Désignation                            | Quantité | Validité | Extra ID |
|----------|-------------|--|----------|----------|----------|
| 0776     | 122062      | SPRING CLAMP PS-03                     | 1        |          |          |
| 1044     | 819493      | WASHER D34/D10,5                       | 3        |          |          |
| 1074     | 290070      | SCREW                                  | 3        |          |          |
| 1267     | 903727      | TUB SHOCK ABSORBER 54/60 PS-15 R ASSY  | 2        |          |          |
| 1349     | 857749      | SUPPORTING SPRING INSERT-CABINET PS-21 | 2        |          |          |
| 1350     | 820573      | WASHER 45X28X1,5-A2F                   | 3        |          |          |
| 4066     | 576360      | DOOR SEAL PS-15                        | 1        |          |          |
| 4070     | 621649      | SCREW M10X20-10.9-BR                   | 1        |          |          |
| 4090     | 871982      | TUB WITH DRUM CA 60-1400 UL PS-15/22-S | 1        |          |          |
| 4093     | 548358      | NUT KPL                                | 3        |          |          |